



Chiswick High Road, London, W4 1TH

Guide Price £350,000

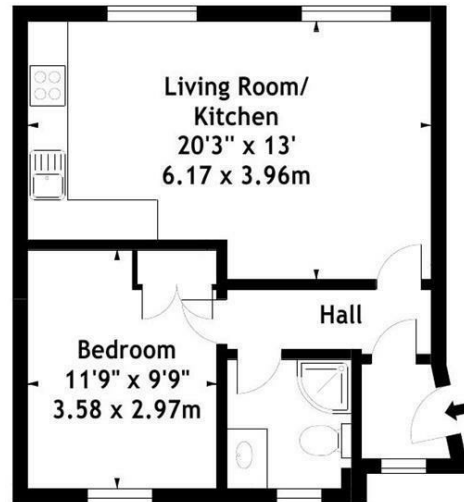
WHITMAN & CO.

SALES · LETTINGS · COMMERCIAL

- First floor period conversion
- Excellent transport links
- Double bedroom with fitted wardrobes
- Close to shops, cafes and restaurants
- 20'3x13' Open plan living room
- No onward chain

Tenure - Leasehold
 Lease length - 113 Years remaining
 Ground Rent - £250 pa
 Service Charge - £1500 pa
 Local authority - Hounslow
 Council Tax - Band C

Chiswick High Road, W4
 Approx. Gross Internal Area
 472 Sq Ft - 43.85 Sq M



First Floor



Measured in accordance with RICS guidelines. Every attempt is made to ensure accuracy, however all measurements are approximate. This floor plan is for illustrative purposes only and is not to scale.

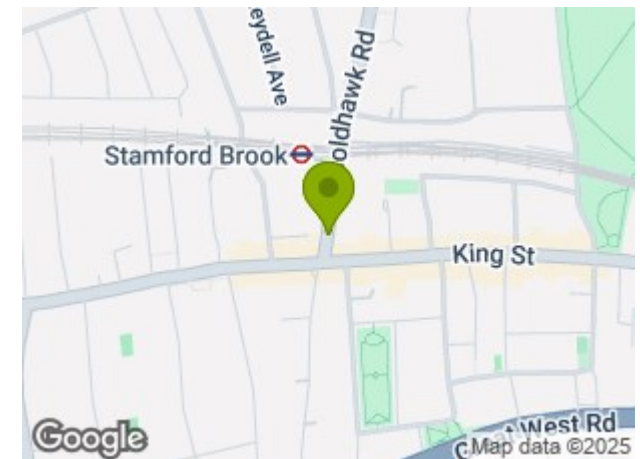
© Datography Ltd 2017
 Photographs * Floorplans * Virtual Tours
 Tel: 0845 643 4401 www.datography.com

THE PROPERTY

A bright, well-presented first-floor apartment with high ceilings set within this period corner building, located moments from numerous amenities. The accommodation comprises an entrance hall, 20'3x13' open plan living room with modern fitted galley style kitchen and wood floors, a double bedroom with fitted wardrobes located to the rear of the property, a shower room, and gas-fired central heating.

The flat is very well located, being a short walk to Chiswick High Road and King Street's shops, cafes and restaurants as well as local parks Ravenscourt Park and St Peters Square and The River. Transport links include Stamford Brook station (a 2-minute walk), local bus routes and the A4/M4 for routes in and out of London. No onward chain.

SITUATION



5-7 Turnham Green Terrace, Chiswick, London, W4 1RG

Tel 020 8747 8800

E-mail sales@whitmanandco.com

Website www.whitmanandco.com



MISREPRESENTATION ACT 1967

Whitman & Co. for themselves and for the vendors give notice that these particulars do not constitute any part of, an offer of contract. All statements contained in these particulars are made without responsibility on the part of Whitman & Co. or the vendor. None of the statements contained in these particulars is to be relied upon as statements or representations of facts. Any intending purchaser must satisfy himself by inspection or otherwise as to the correctness of each of the statements contained in these particulars. The vendor does not make or give, and neither Whitman & Co. or any person in their employment has any authority to make or give, any representation or warranty whatever in relation to the property.